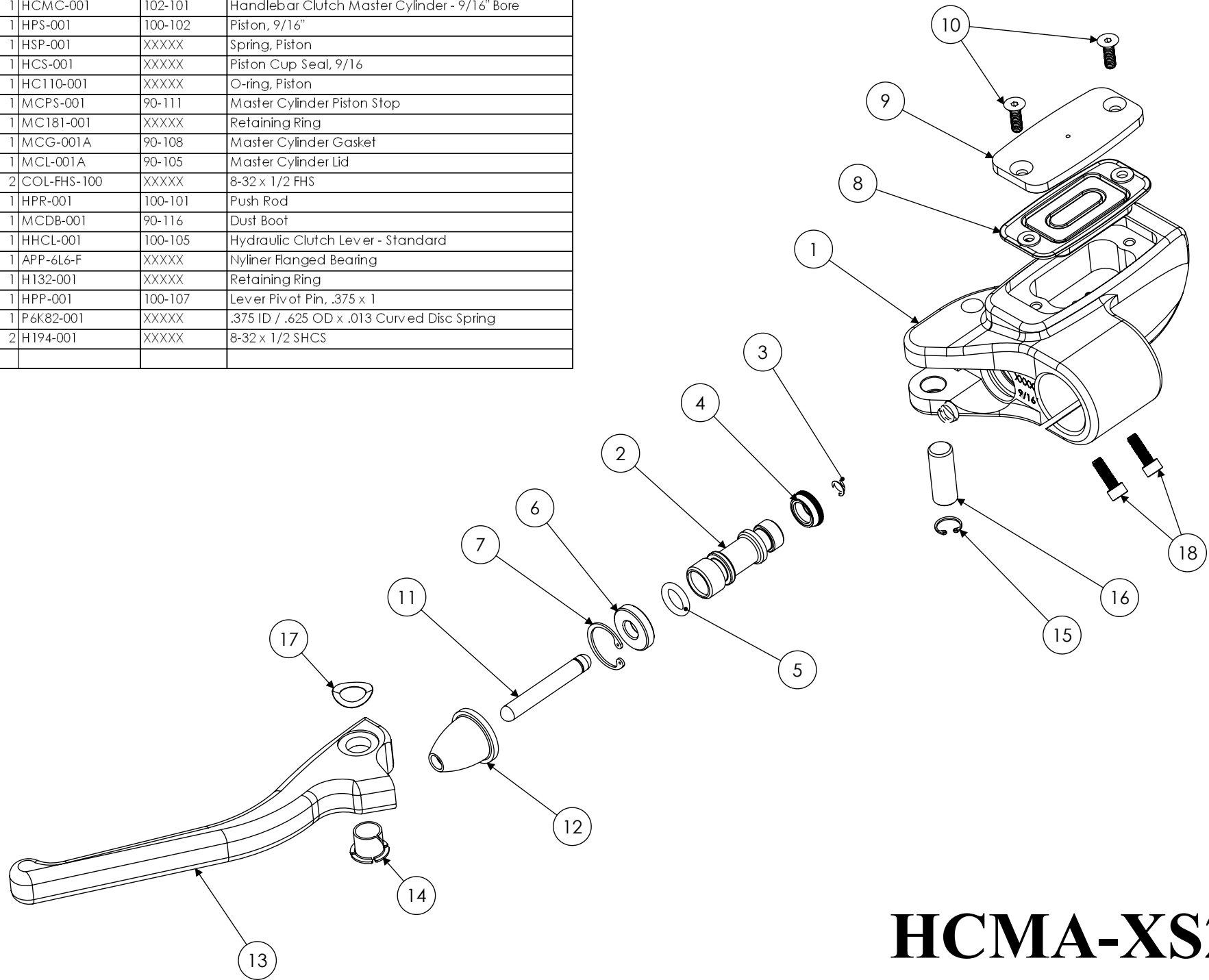


ITEM	QTY.	P/N	DWG #	DESCRIPTION
1	1	HCMC-001	102-101	Handlebar Clutch Master Cylinder - 9/16" Bore
2	1	HPS-001	100-102	Piston, 9/16"
3	1	HSP-001	XXXXX	Spring, Piston
4	1	HCS-001	XXXXX	Piston Cup Seal, 9/16
5	1	HC110-001	XXXXX	O-ring, Piston
6	1	MCPS-001	90-111	Master Cylinder Piston Stop
7	1	MC181-001	XXXXX	Retaining Ring
8	1	MCG-001A	90-108	Master Cylinder Gasket
9	1	MCL-001A	90-105	Master Cylinder Lid
10	2	COL-FHS-100	XXXXX	8-32 x 1/2 FHS
11	1	HPR-001	100-101	Push Rod
12	1	MCDB-001	90-116	Dust Boot
13	1	HHCL-001	100-105	Hydraulic Clutch Lever - Standard
14	1	APP-6L6-F	XXXXX	Nyliner Flanged Bearing
15	1	H132-001	XXXXX	Retaining Ring
16	1	HPP-001	100-107	Lever Pivot Pin, .375 x 1
17	1	P6K82-001	XXXXX	.375 ID / .625 OD x .013 Curved Disc Spring
18	2	H194-001	XXXXX	8-32 x 1/2 SHCS



# HCMA-XS21