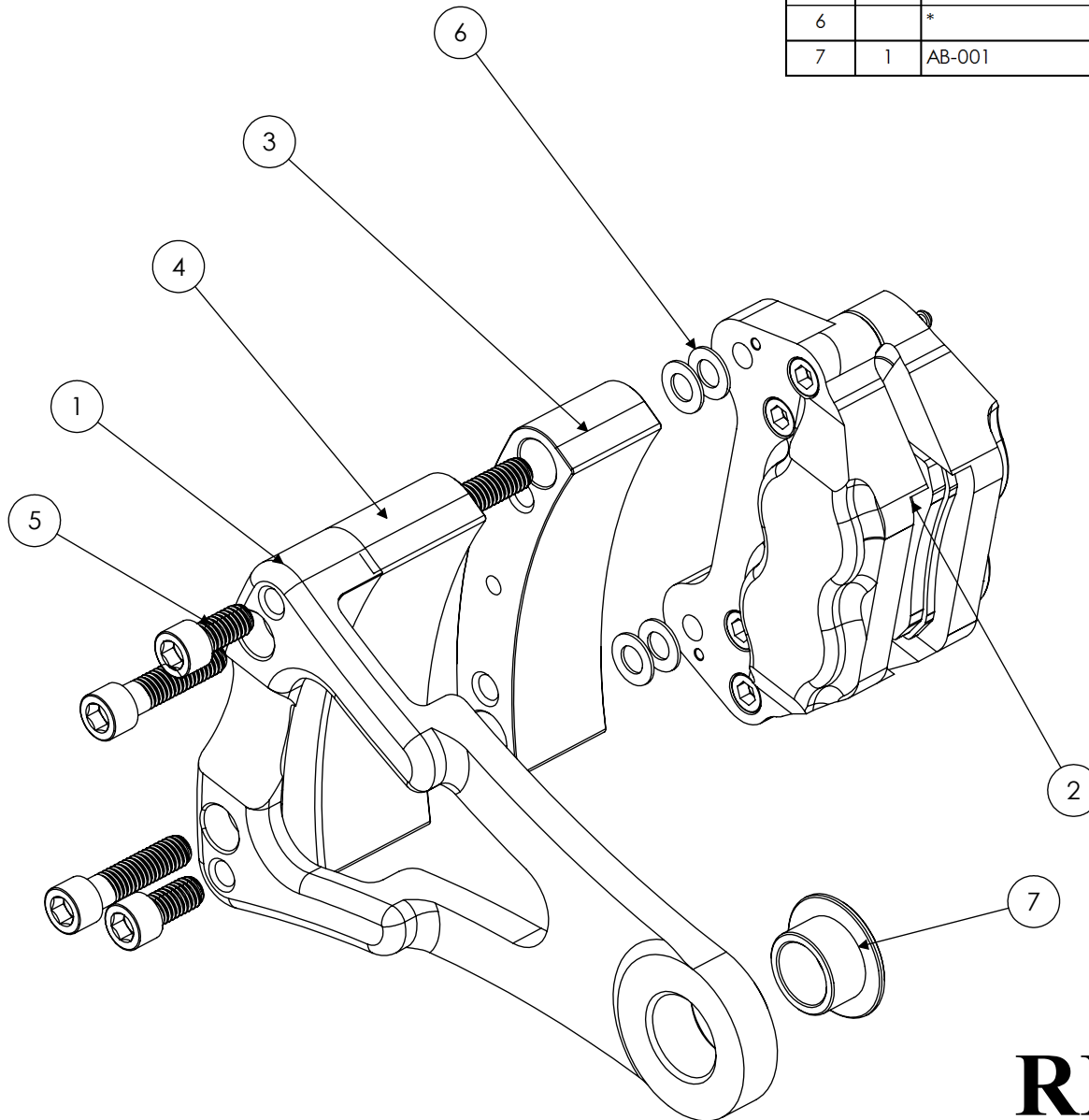


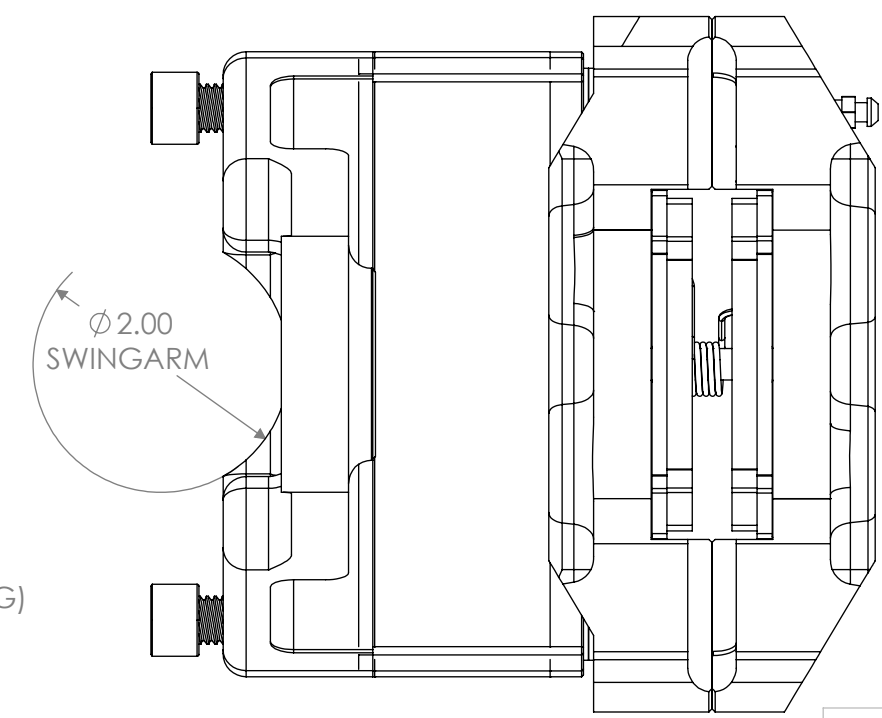
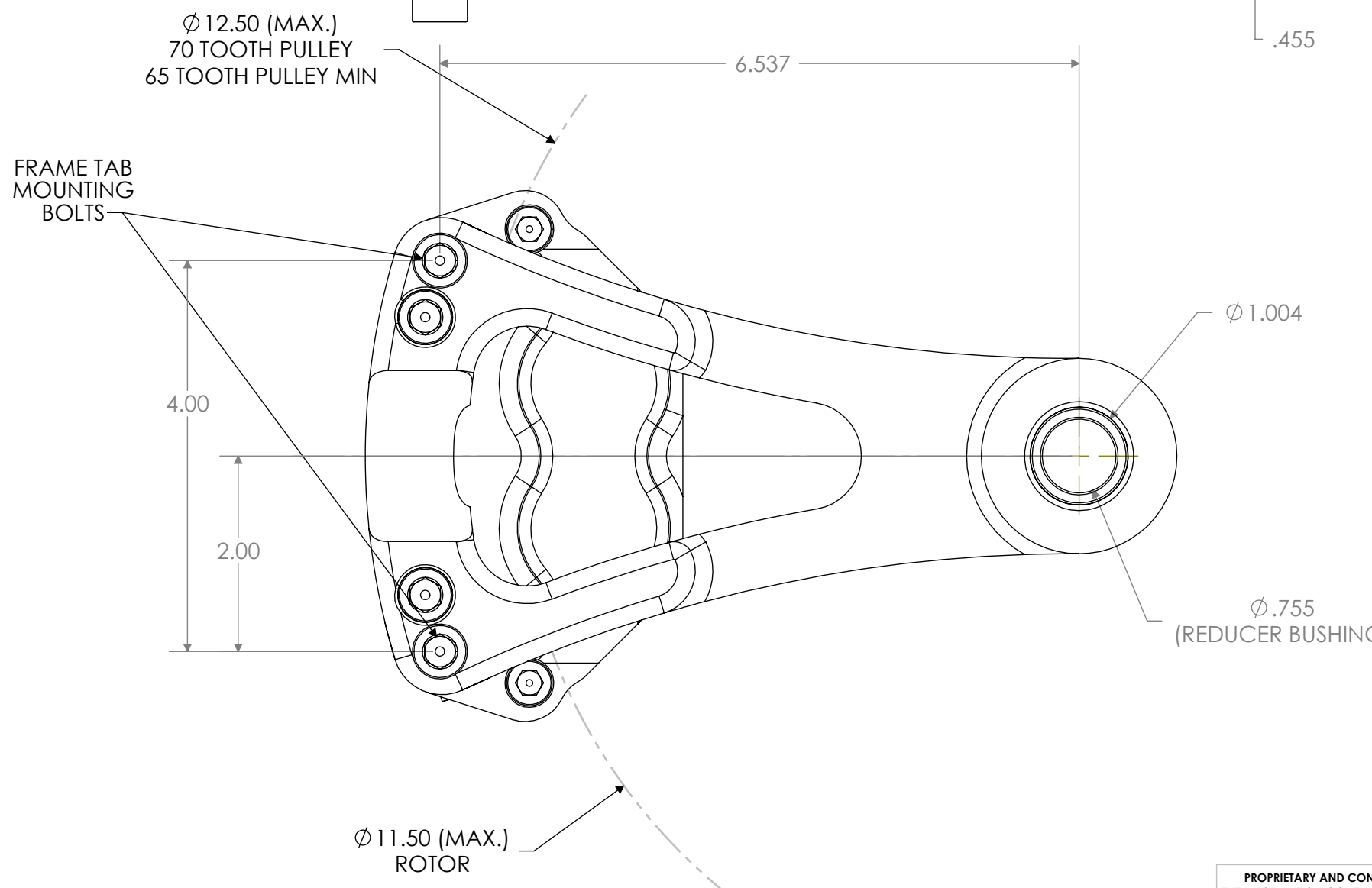
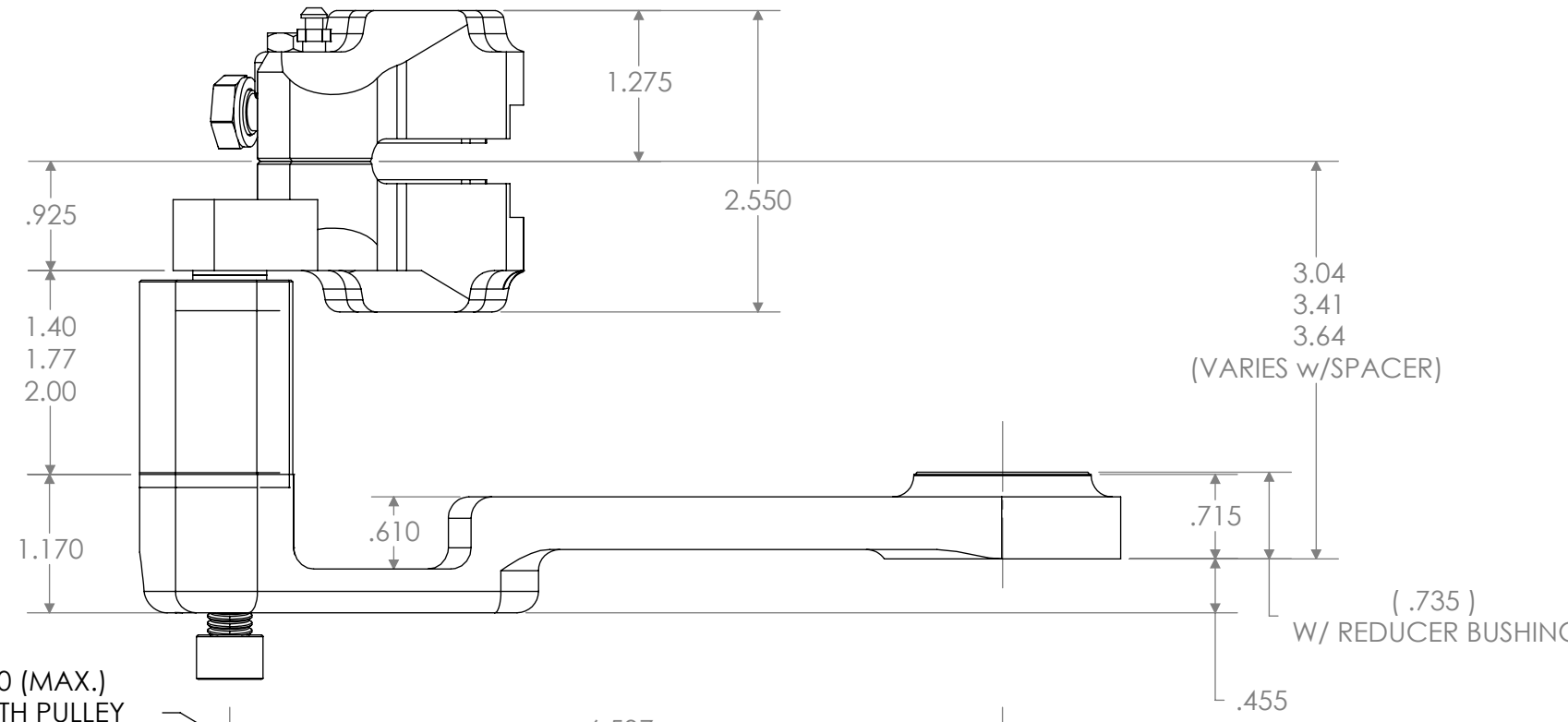
ITEM	QTY.	P/N	DWG #	DESCRIPTION
1	1	RBDS-300-RS	21-201	Bracket, Driveside Brake, Round Swingarm
2	1	LHDSXX100	12-100	Caliper, 100 Series 4 Piston, Driveside Brake
3	4	RSDSXX-XXX-RS	21-202	Spacer, Driveside Bracket, Round Swingarm
4	4	COL-SHC-984	--	3/8-16 x 1.5 SHCS
5	2	COL-SHC-980	--	3/8-16 x .75 SHCS
6		*	--	3/8 Shim (* Component of P/N 4HK-DS1)
7	1	AB-001	21-1401	Reducer Bushing, Axle **

** NOT USED ON RKDSLXX300-RS
ITEM #3 OFFERED IN VARYING THICKNESS



RKDSLXX100-RS

REVISIONS			
LTR	DESCRIPTION	DATE	APPROVAL



Ø 12.50 (MAX.)
70 TOOTH PULLEY
65 TOOTH PULLEY MIN

FRAME TAB
MOUNTING
BOLTS

Ø 1.004

Ø .755
(REDUCER BUSHING)

Ø 11.50 (MAX.)
ROTOR

PROPRIETARY AND CONFIDENTIAL
THE INFORMATION CONTAINED IN THIS
DRAWING IS THE SOLE PROPERTY OF
HAWG HALTERS, INC. ANY
REPRODUCTION IN PART OR AS A WHOLE
WITHOUT THE WRITTEN PERMISSION OF
HAWG HALTERS, INC. IS
PROHIBITED.

TOLERANCES UNLESS NOTED:		DRAWN	NAME	DATE
X.X:	+/- .03	TEZ	TEZ	06/29/07
X.XX:	+/- .01	CHECKED		
X.XXX:	+/- .005	ENG APPR.		
FRAC:	+/- 1/16	MFG APPR.		
ANGULAR:	+/- 1°	Q.A.		
MATERIAL		STOCK SIZE:		
NEXT ASSY	USED ON	FINISH		
		--		
APPLICATION		DO NOT SCALE DRAWING		

Hawg Halters, Inc.
389 Lumpkin County Parkway
Dahlonega, GA 30533

PART NO.	RKDSLxx300-RS	
PART:	DRIVESIDE BRAKE	
ASSEMBLY:	INBOARD / DRIVESIDE BRAKE - RS	
SIZE	DWG. NO.	REV.
B	21-200	