



Installation Instructions for Hawg Halters, Inc.
23" Wheel 2014-up FL Touring Model Triple Trees

THIS PRODUCT IS DESIGNED FOR USE WITH THE INSTALLATION OF A 23" SIZE WHEEL OR LARGER ON A FL MODEL STOCK FRAME!

NOTE: PLEASE READ INSTRUCTIONS FULLY BEFORE STARTING INSTALLATION AS VARIOUS MODELS REQUIRE SPECIFIC COMPONENTS.

WARNING – FRONT END PERFORMANCE IS A CRITICAL SAFETY ITEM. TRIPLE TREES SHOULD BE INSTALLED BY A QUALIFIED SERVICE TECHNICIAN ONLY!!!!

- 1. Make sure the motorcycle is properly secured when raised. Remember to balance it properly as you will be removing the complete front end.**
- 2. Remove the front wheel assembly, brakes and fender.**
- 3. Remove the fairing as necessary on batwing models, nacelle on Road King models and front and rear fork covers on Road Glide models. Remove the fork tube assemblies and then remove both the upper and lower triple trees. Finally disassemble the handlebars from the top triple tree.**
- 4. Refer to HHI drawing #45-1900 for a complete parts breakdown.**
- 5. Install the supplied lower dust shield and neck bearing. Pack bearing with a good quality EP grease. Replace the bearing race at this time if there are any signs of wear.**
- 6. Check the upper neck bearing and replace if necessary. Apply anti-seize to the threads of HD neck stem bolt, item #8.**
- 7. Insert the stock riser bushing upper half in item #3 and place it in the top of the upper triple tree. Install the riser bushing lower half in the underside of the triple tree. Install the handlebar riser assembly using blue Loctite on the riser bolts, do not torque at this time.**
- 8. Install the lower triple tree assembly into the bottom of the frame neck and thread the upper neck bolt, item #8, into the lower neck stem until the bearings are in place. Do not tighten until after final assembly.**
- 9. Referring to your HD service manual for proper method of fork disassembly, disassemble the complete fork tube/leg assemblies at this time in preparation for the install of the supplied HHI Fork Travel Limiters, item #13.**

10. See supplied drawing #31-313, 49FL FORK ASSEMBLY, for proper location of the travel limiter. It will fit down over the damper stop and be positioned in the bottom of the fork leg. As a further precaution, we recommend a dry assembly test mock-up of the fork assembly to check for adequate fender to lower tree clearance when fully compressed. This is best done without the main springs installed to allow full compression of the fork assembly.
11. Suspension assembly and upgrades. On 2014-16 models we recommend increasing the suspension preload by adding the Preload Spacer supplied or replacing the factory rebound and main spring with upgraded components. As a further improvement we suggest updating to the 2017-later HD fork tube and spring package. These models can be assembled with the stock components for good results when installed with our X-23 product. Alternatively, various aftermarket manufacturers also offer suspension upgrade components to improve performance and handling.
12. Upon completion of the assembly of the fork tubes and legs, fill with fresh fork oil. We recommend the Screaming Eagle or equivalent type fork oil be used for improved dampening. Refer to your service manual for the correct amount of fluid.
13. Reinstall lower fork covers at this time using item #10 of the supplied hardware. Apply blue Loctite to the screw threads. Next, apply blue loctite to the screw threads of item #11 & #13. Install item #13 into the upper triple tree and #11 into the lower triple tree split clamp holes, leaving the screws loose.
14. Check the fork tube bores for any sharp edges or burrs prior to installing the fork tubes. Position the fork tubes through the lower tree and into the upper tree aligning the top of the fork tube with the back edge of the upper triple tree fork bore. Secure the fork tubes in the upper triple tree only by hand tightening the 4 bolts. Do not torque at this time.
15. Proceed with setting proper steering head bearing preload. Refer to your H-D 2014-up Touring model service manual for the proper neck bearing torque procedures. We have found that a torque setting slightly greater than the factory value works best with the 23" wheel install.
16. Once the steering head bearings are set correctly, apply torque of 25 ft.-lbs to the eight triple tree fork clamp bolts, #11 & #13. Also apply blue Loctite to the upper tree stem bolt clamp screw #9 and torque this fastener to 30 ft.-lbs.
17. Install the handlebars and check alignment of the riser assembly and then torque bolts to 60 ft.-lbs.
18. Install fender, front wheel, brake hose mount and brake caliper assembly per factory service manual specifications.
19. Reinstall factory fairing, nacelle and other remaining components.

All HAWG HALTERS, Inc. triple trees are guaranteed to be free from defects in material and workmanship for a period of one year from the date of purchase.

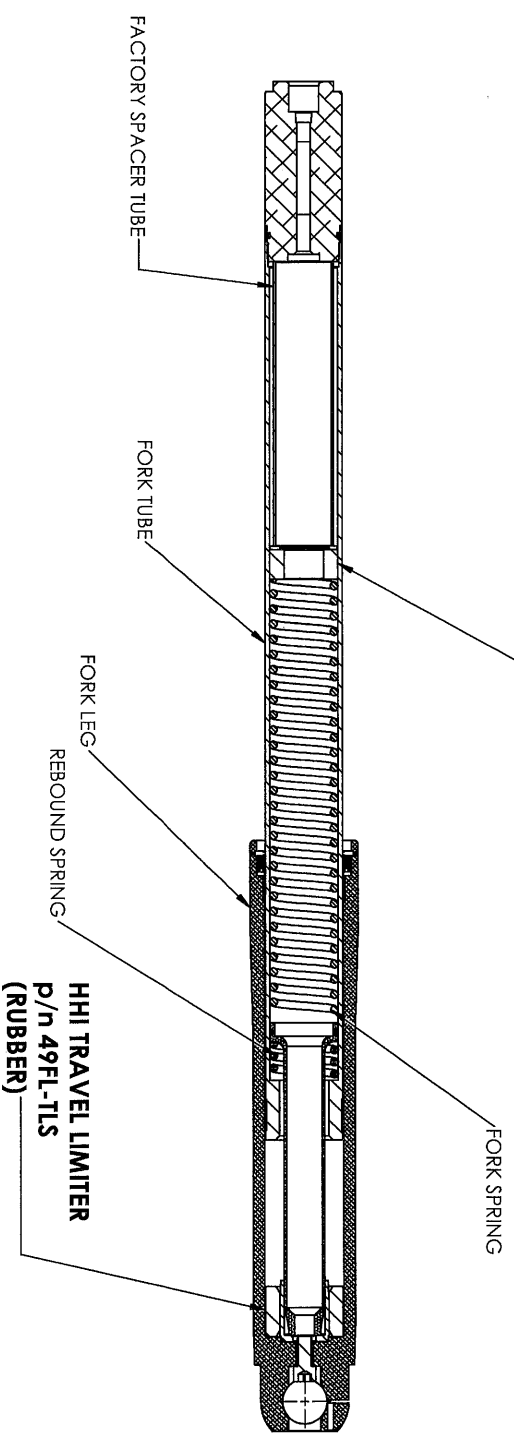
If you have any questions call:
TOLL FREE 1-877-HHALTER (442-5837)
HAWG HALTERS, INC.
389 Lumpkin County Parkway
Dahlonega GA 30533

6/18

HHI FL 2014 X23 Triple Tree Installation Instructions

REVISIONS		DATE	APPROVAL
LTR	DESCRIPTION		

**OPTIONAL PRELOAD SPACER
NOT REQUIRED ON 2017-LATER MODELS**



SECTION A-A
SCALE 1 : 3

PROPRIETARY AND CONFIDENTIAL
THE INFORMATION CONTAINED HEREIN IS UNCLASSIFIED EXCEPT WHERE SHOWN OTHERWISE.
REPRODUCTION IN PART OR AS A WHOLE WITHOUT THE WRITTEN PERMISSION OF HAWG HALTERS, INC. IS PROHIBITED.

NAME	DATE	DESCRIPTION	APPLICATION
XXXX	XX/XX/XX	DESIGN	USED ON
XXXX	XX/XX/XX	CHECKED	USED ON
XXXX	XX/XX/XX	ENG APPR.	
XXXX	XX/XX/XX	MFG APPR.	
XXXX	XX/XX/XX	ASSEMBLY	
XXXX	XX/XX/XX	FINISH	

Hawg Halters, Inc.
3880 Highway 101, Suite 100
Darien, CT 06424

49FL-FORK-ASSEMBLY

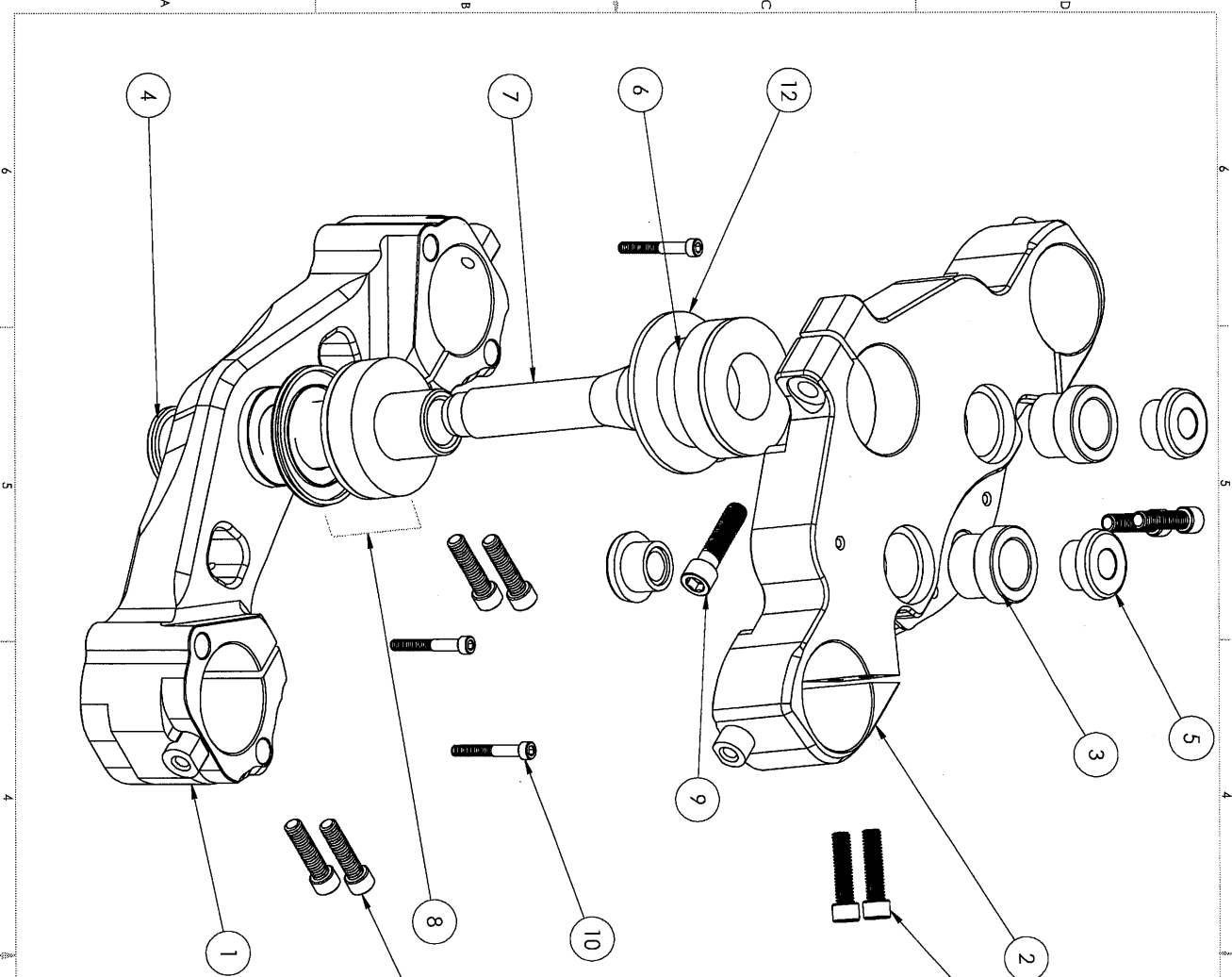
PART NO. **49FLMX23**

DATE ENG. NO. **31-313**

REV. **B**

6 5 4 3 2 1

A B C D



ITEM	QTY	P/N	DWG #	DESCRIPTION
1	1	49FLMR6-L	45-1902	49mm 6deg Lower Tree
2	1	49FLMR6-U	45-1901	49mm 6deg Upper Tree
3	2	41FL-RBS-STK	45-1203	41FL 6deg Riser Bushing Adaptor
4	1	NS-49FL	45-1903	49FL Lower Neck Stem Riser Bushing (H-D)
5	4	--	--	Neck Bearing (H-D)
6	1	--	--	49FL Upper Neck Stem (H-D)
7	1	NBR-006L	--	BEARING, RACE, AND DUST SEAL
8	1	FAST-93309	--	3/8-16 x 1 1/2 SHCS
9	1	FAST-0130554	--	10-24 x 1 1/2 SHCS
10	4	FAST-93257	--	5/16-18 x 1 1/4 SHCS
11	4	--	--	Upper Dust Shield (H-D)
12	1	--	--	5/16-18 x 1" SHCS
13	4	FAST-93255	--	

SEE DRAWING # 31-313

2	49FL-TLS	45-1904	TRAVEL LIMIT
---	----------	---------	--------------

REVISIONS		DATE	APPROVAL
LTR	DESCRIPTION		
A	ADDED 5/16-18 x 1" AND REDUCED 5/16-18 x 1.25" BY 4	1/12/2016	NSG

PROPRIETARY AND CONFIDENTIAL
 THE INFORMATION CONTAINED IN THIS DRAWING IS THE SOLE PROPERTY OF HAWG HAVERS, INC. ANY REPRODUCTION IN PART OR AS A WHOLE WITHOUT THE WRITTEN PERMISSION OF HAWG HAVERS, INC. IS PROHIBITED.

NEST ASSY	USED ON	RIGHT	DO NOT SCALE DRAWING
APPLICATION			

TOLERANCES (UNLESS NOTED):	DRAWN	DATE
XXX: +/- .03	NSG	11/4/2013
XX: +/- .015	CHECKED	
XX: +/- .01	ENG APPR.	
XX: +/- .005	MFG APPR.	
ANGULAR: +/- 1/16	Q.A.	
MATERIAL	STOCK SIZE	

Hawg Havers, Inc.
 388 Lupton County Parkway
 Lexington, KY 40503

ART NO.	49FL-X23
NAME	49FL 6 DEG TREES
ASSEMBLY	49FLX23
REV. DWG. NO.	45-1900
REV.	B